

Fidelity Stainless



Standard Clevis Hanger FP 260

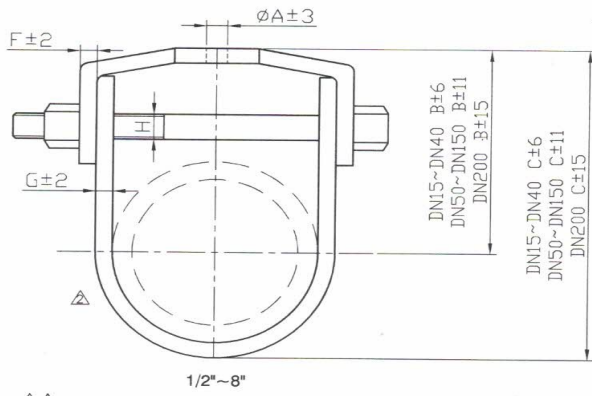
SS304 ASTM A240 1/2" – 18"



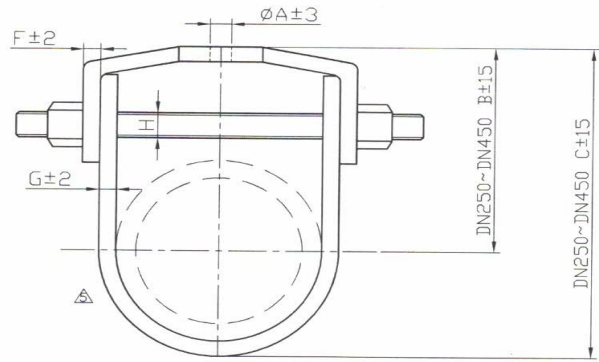
Full Dimensions below

1-855 Steeles Avenue East, Milton, Ontario, L9T 5H3
P-289-851-1076 / 1-888-PAC-TRADE / F-289-851-1079

Thank you for your business!



1/2"~8"



10"~18"

Pipe Diameter		Pipe Outer Diameter	Allowable Loads (Kg) (Safety Factor:5)	A	B	C	F	G	H	Weight (kg)
DN	NPS									
15	1/2"	21.7	240	3/8"	59	73	2.5	2.5	1/4"	0.08
20	3/4"	27.2	240	3/8"	63	82	2.5	2.5	1/4"	0.09
25	1"	34	270	3/8"	64	86	3	3	5/16"	0.13
32	1-1/4"	42.7	270	3/8"	72	98	3	3	5/16"	0.15
40	1-1/2"	48.6	270	3/8"	76	106	3	3	5/16"	0.16
50	2"	60.5	270	3/8"	85	120	3	3	5/16"	0.19
65	2-1/2"	76.3	420	1/2"	110	151	4	4	3/8"	0.39
80	3"	89.1	420	1/2"	108	157	4	4	3/8"	0.4
100	4"	114.3	510	1/2"	138	200	6	4	1/2"	0.65
125	5"	139.8	720	5/8"	156	231	6	4	1/2"	0.9
150	6"	165.2	720	5/8"	180	268	6	4	1/2"	1
200	8"	216.3	820	3/4"	211	327	6	4	5/8"	1.9
250	10"	267.4	1230	3/4"	250	388	6	4	5/8"	2.3
300	12"	318.5	1230	3/4"	303	474	6	4	5/8"	2.7
350	14"	355.6	1710	3/4"	315	493	6	4	5/8"	2.9
400	16"	406.4	1710	3/4"	366	562	6	4	3/4"	3.3
450	18"	457.2	1710	3/4"	456	687.2	6	4	3/4"	3.7

unit:mm

1-855 Steeles Avenue East, Milton, Ontario, L9T 5H3
 P-289-851-1076 / 1-888-PAC-TRADE / F-289-851-1079

Thank you for your business!